

## DAE V-200RP

### 2" Vertical Hot Water Meter with Pulse Output, Measuring in Gallon + Couplings

#### [Specification]

Model	V-200RP
Type	2" Vertical Hot Water Meter with Pulse Output, Measuring in Gallon + Couplings
Unit	US Gallon
Pulse Output	1 pulse per 1 gallon, a dry contact (i.e. no voltage) reed switch with 2 wires, 1.5m. The third party system should not generate electricity more than 0.01A (typically 0.005A like DAE AMR), 24VAC/DC.
Accuracy	+/-1.5% within normal flow as per AWWA Standard
Standard	Conforms to both AWWA C708 and ISO 4064 Class B
Max Water Temperature	194F (90C)
Couplings	Included (NPT Thread)
Meter Body	Bronze
Size	Length without couplings: 5.94 inches Length with couplings: 11.44 inches Dimension: 5.94" length, 5" wide, 8" height. Weight: 16 lbs.
Bore Diameter	2.04 inches (51.7 mm)
Max. Working Pressure	232 psi, exceeding the requirement from AWWA standard 150 psi.
Flow Rate	Safe Maximum Flow Rate: 160 GPM Maximum Continuous Flow Rate: 80 GPM Minimum Test Flow Rate: 2 GPM Normal Test Flow Limits: 8-160 GPM
Pressure Drop	0.1 psi @ 20 GPM, 1.1 psi @ 40 GPM, 2.4 psi @ 60 GPM

#### [Feature]

- Mount: vertically, dial facing upwards, water flowing upwards. For the water flowing downwards, please refer to DAE PD-200 (for cold water only), which can be able to be installed in any position, vertically or horizontally, dial facing upwards or downwards or horizontally, water flowing downwards or upwards.
- Max. Reading:99,999,999 gallons, Min.Reading:0.05 gallons. The 1st digit from the right has a multiplier of 1000 gallons. For example, if you see 01234 on the digits, it is 1234000 gallons. The 1st dial under the digits has a multiplier of 100 gallons. The 3rd dial under the digits is in gallon. Reading on 2nd picture of listing is 3.9 gallons.
- 2 years warranty from the seller.

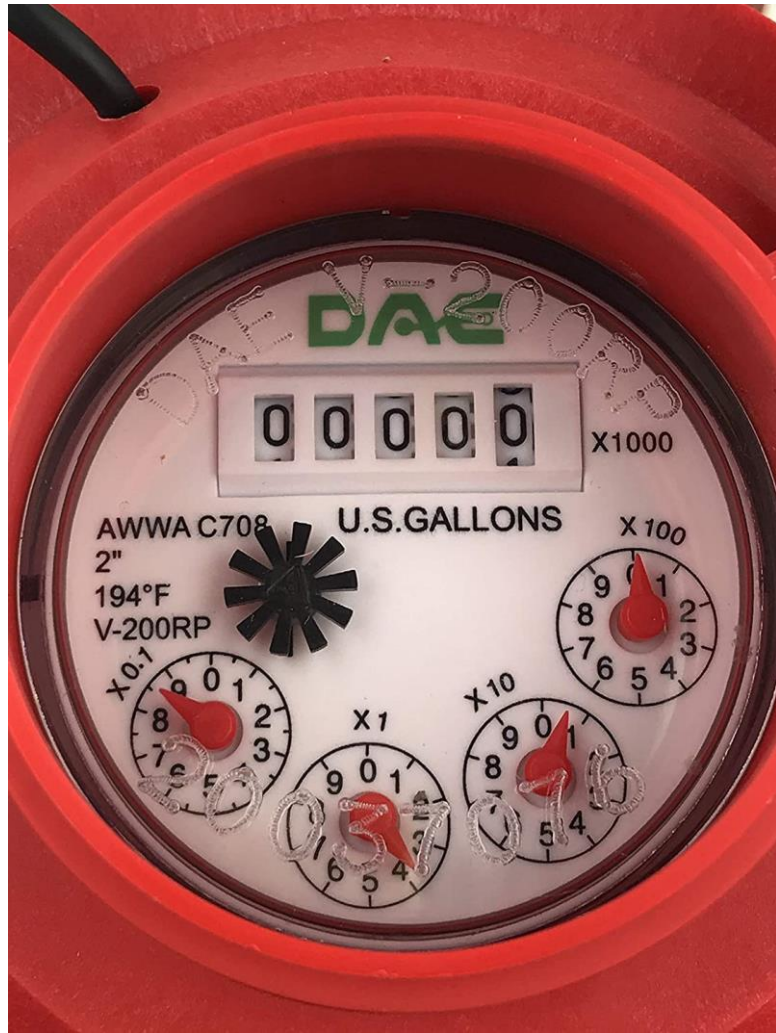


## [Remote Reading Solutions]

- Cloud Metering available (2nd picture) with DAE CC2030 Gateway. CC2030 will collect water usage from DAE AMR (for 16 meters) or AMR130 (for 1 meter) and send them to cloud server through Ethernet. With PC, cell phone, the landlords can see real time data, monthly water usage & billing reports to their tenants. If there is abnormal usage (ex. Broken piping), an email alert will be sent to your cell phone. No IT guy required. Just connect wires as per a simple picture (see video) & ready to go.
- Ready for use with CO-10 KIT or CO-10 Electronic Pulse Counter - An inexpensive remote reading solution Please refer to 4th picture.
- Wireless remote reading available with DAE WSC500 RF converters. Please refer to 6th picture.



[Picture 1]



[Picture 2]



[Picture 3]

# Remote Reading with Pulse Counter

## An Inexpensive Solution

Note: Only meters with pulse output like AS200U-75P are eligible to be connected to CO-10.

**Electronic Pulse Counter CO-10**



[info@daecontrols.com](mailto:info@daecontrols.com), (248) 635 3708, [www.daecontrols.com](http://www.daecontrols.com)

[Picture 4]

# Cloud System Architecture

## Water Meters

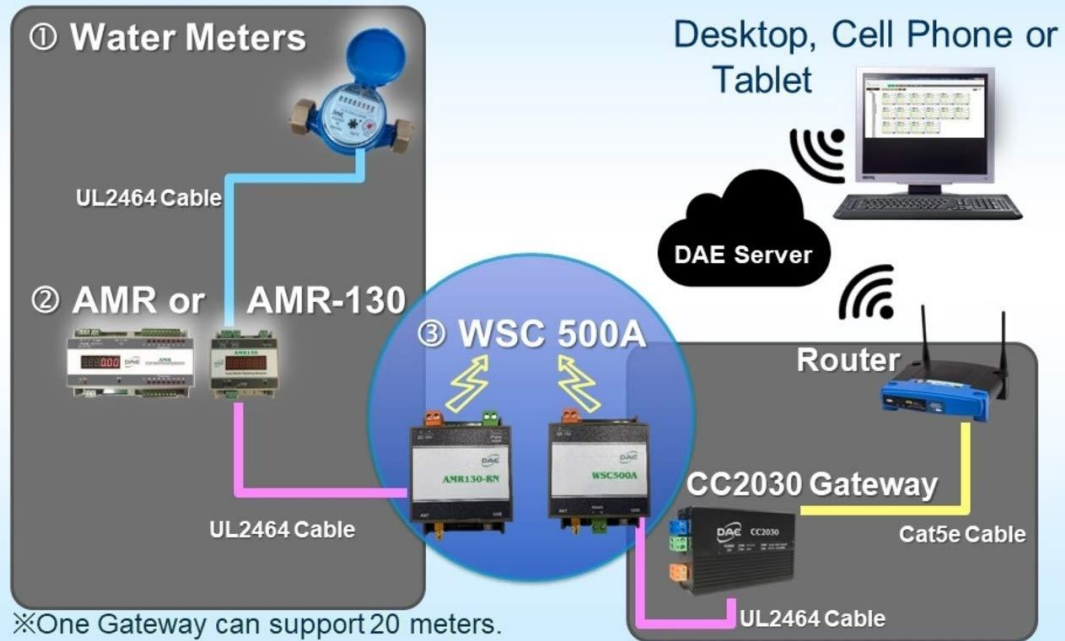


[info@daecontrols.com](mailto:info@daecontrols.com), (248) 635 3708, [www.daecontrols.com](http://www.daecontrols.com)

[Picture 5]



# Wireless Cloud System Architecture - Water



※One Gateway can support 20 meters.  
[info@daecontrols.com](mailto:info@daecontrols.com), (248) 635 3708, [www.daecontrols.com](http://www.daecontrols.com)

[Picture 6]