

DAE PD-75

Lead Free Potable, Positive Displacement Water Meter, 3/4" NPT Couplings, Pulse Output, Gallon

[Specification]

Model	PD-75
Type	NSF61 Certified Lead-Free Potable, Positive Displacement Water Meter, 3/4" NPT Couplings at both ends, with Pulse Output (Reed Switch, dry contact, no voltage).
Unit	Totalizer Measuring in Gallon
Pulse Output	1 gallon/pulse, a dry contact (i.e. no voltage) reed switch with 2 wires, 1.5m. The switch may be damaged if input electricity is more than 0.01A, 24V. We shall not be responsible for the result if connecting to third party device which is not certified by DAE.
Accuracy	Certified by independent test lab to exceed AWWA national accuracy standards +/-1.5% within normal flow rate range.
Certification	AWWA C700 and ISO 4064 Class C, for clean water only
Max Water Temperature	122°F (50°C)
Couplings	NSF61 Certified Lead-Free Couplings Included
Meter Body	Lead-Free Bronze
Dimension	Length without couplings: 7.5 inches Length with couplings: 11.5 inches 3.81" wide, 4.75" height. Weight: 5 lbs. 7 once.
Bore Diameter	0.709 inches (18 mm)
Flow Rate	Safe Maximum Flow Rate: 20 GPM Recommended Maximum Continuous Flow Rate: 10 GPM Minimum Test Flow Rate: 0.25 GPM Normal Test Flow Limits: 1-20 GPM
Pressure Drop	0.7 psi @ 5 GPM, 2.8 psi @ 10 GPM

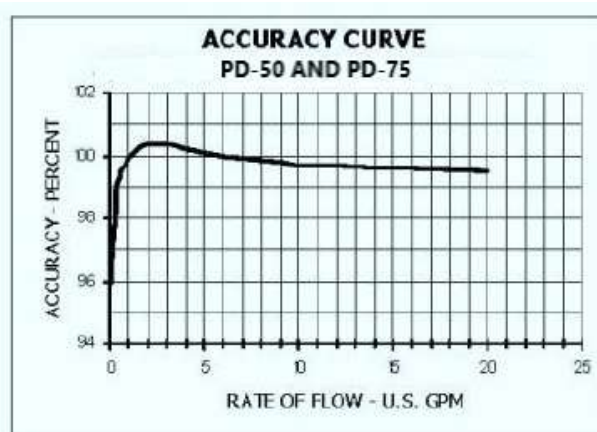
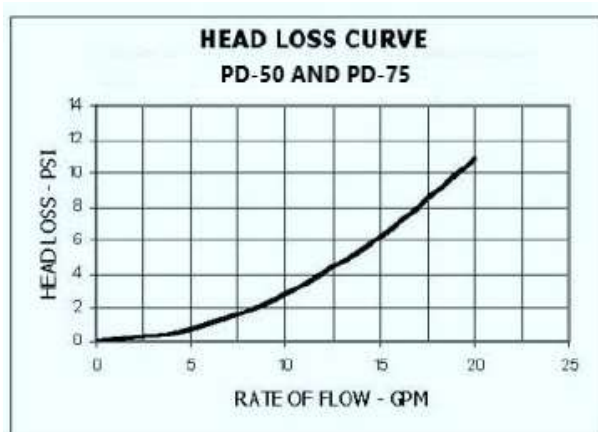
[Feature]

- Mount: Can be installed in any position, vertically or horizontally, dial facing upwards or downwards or side-way, water flowing downwards or upwards.
- Can detect very small flow.
- The pulse emitter device consists of a plastic housing with Reed Switch and 1.5 m cable with 2 cores in red and black. It is a dry contact (no voltage).
- Maximum Reading: 9,999,999.99 gallons, Minimum Reading: 0.01 gallons. The 1st digit from the right is in gallons. The dial is in one tenth gallons (*0.1 gallons). For example, if you see 0001234 on the register, it is 1234 gallons. Reading on 4th picture of the listing is 0.23 Gallons.
- The Max. working pressure is 232 psi, exceeding the requirement from AWWA standard 150 psi.

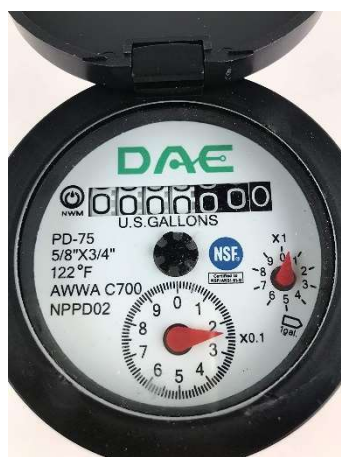
- 2 years warranty from the seller.

[Remote Reading Solutions]

- Cloud Metering available with DAE CC2030 Gateway. Please refer to 6th picture. DAE CC2030 gateway will get the water consumptions from DAE AMR (Auto Meter Reading Module with RS485 communication for 16 water meters with Pulse Output) or DAE AMR130 (for 1 meter) and send them to the cloud (DAE server) through Ethernet. With PC or cell phone or tablet, the building owners or property managers will therefore be able to get access to real time data as well as the monthly water consumption and billing reports to their tenants. If there is abnormal usage (ex. Broken piping), an email alert will be sent to your cell phone automatically.
- Ready for use with CO-10 KIT or CO-10 Electronic Pulse Counter - An inexpensive remote reading solution Please refer to 5th picture.
- Wireless remote reading available with DAE WSC500 RF converters. Please refer to 7th picture.



[Picture 1]



[Picture 2]



[Picture 3]



[Picture 4]

Remote Reading with Pulse Counter

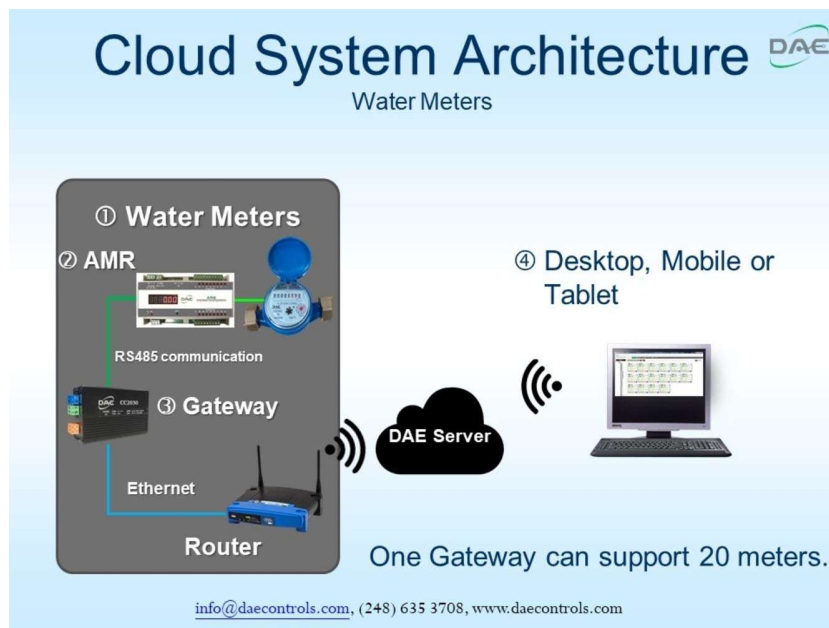
An Inexpensive Solution

Note: Only meters with pulse output like AS200U-75P are eligible to be connected to CO-10.

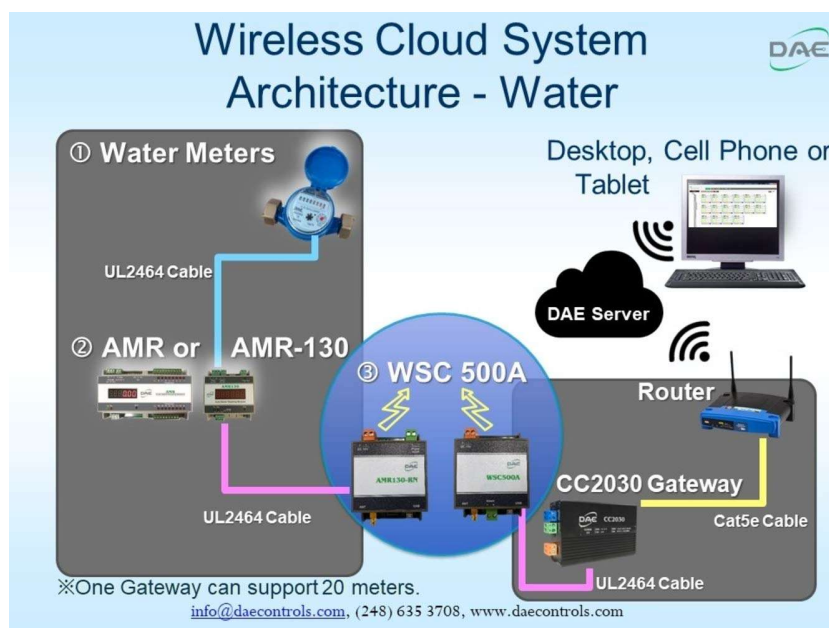
Electronic Pulse Counter CO-10

info@daecontrols.com, (248) 635 3708, www.daecontrols.com

[Picture 5]



[Picture 6]



[Picture 7]